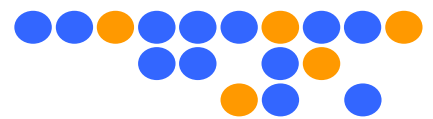


High Performance SMA Connector Data Sheet



■ PSF-S01 Series

(SMA End-Launch Jack)

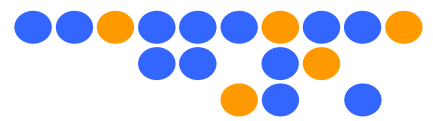


Technical Data

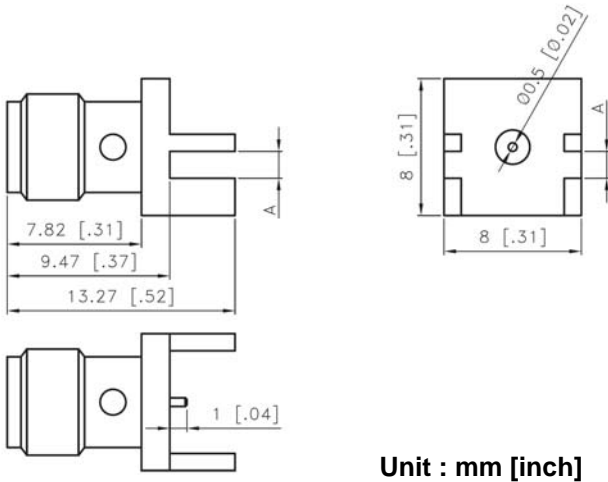
Electrical Data	Impedance	50 Ω
	Max. Frequency	26.5 GHz
	Insulation Resistance	Min. 5 G Ω
Mechanical Data	Force to Engage/Disengage	2.0 pounds max.
	Durability	500 mating cycles
	Recommended Mating Torque	7~10 inch-pounds
Environmental Data	Operating Temp.	-40 $^{\circ}$ C ~125 $^{\circ}$ C
	Vibration	MIL-STD-202
	Shock	MIL-STD-202
	RoHS	Compliant

Material Data		Material	Surface Plating
	Center Contact	BeCu	Gold Plating on Ni
	Body	Brass	Gold Plating on Ni
	Insulator	PTFE	
	Captivation	Low Loss RESIN	

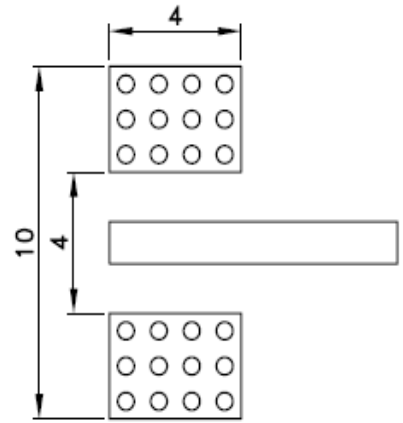
High Performance SMA Connector Data Sheet



Outline Drawing



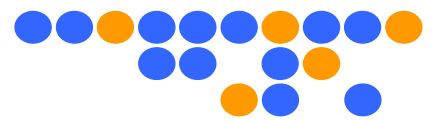
Recommended PCB Pattern



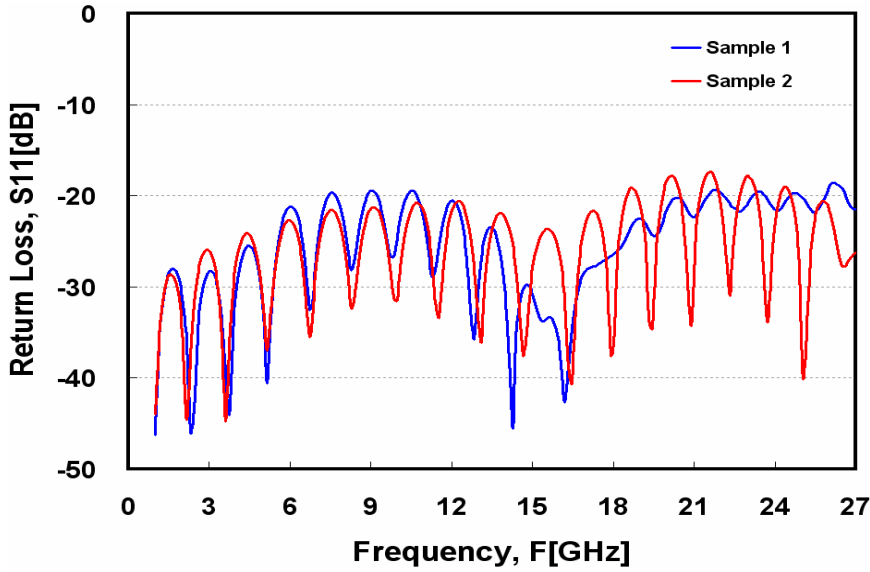
Part Number & Board Clearance

Part No.	OLD Part No.	DIM A mm [inch]
PSF-S01-000	PSF-S01-0.6mm	0.60 [0.024]
PSF-S01-001	PSF-S01-0.8mm	0.08 [0.031]
PSF-S01-002	PSF-S01-1.0mm	1.00 [0.039]
PSF-S01-003	PSF-S01-1.1mm	1.10 [0.043]
PSF-S01-004	PSF-S01-1.2mm	1.20 [0.047]
PSF-S01-005	PSF-S01-1.3mm	1.30 [0.051]
PSF-S01-006	PSF-S01-1.5mm	1.50 [0.059]
PSF-S01-007	PSF-S01-1.6mm	1.60 [0.063]
PSF-S01-008	PSF-S01-1.73mm	1.73 [0.068]
PSF-S01-009	PSF-S01-2.1mm	2.10 [0.083]
PSF-S01-010	PSF-S01-2.25mm	2.25 [0.089]
PSF-S01-011	PSF-S01-3.6mm	3.60 [0.142]

High Performance SMA Connector Data Sheet



Performance



<DUT>

Connector

- PSF-S01-0.8MM : 2ea

PCB

- FR4 Sub Thickness : 0.6 mm

- 50 Ω Line Width : 1.2 mm

- Line Length : 61 mm

