

BMA Connectors



GigaLane's **BMA Connectors** offer you precise mating and excellent VSWR performance through 22 GHz. They are designed based on MIL standard and are ideally suited for communication base station equipment, rack-and-panel applications with appropriate float-mounted jacks, building block systems such as radar.

Features

- DC to 22 GHz
- Allows axial and radial misalignments
- Excellent vibration & shock performances (MIL-STD-202)
- Radar, base station equipment & rack-and-panel application



Specifications

Electrical Data	Impedance		50 Ohm	
	Frequency range		DC to 22 GHz	
	Dielectric withstanding voltage		1,000 Vrms at sea level	
	Insulation resistance (min)		5,000 megaohms	
	Contact resistance (max)		Center conductor 6.0 milliohms Outer conductor 2.0 milliohms	
	Insertion loss (dB max)		0.07 * \sqrt{f} (GHz)	
	RF leakage (fully mated)		-90 dB @ 22 GHz	
		VSWR	DC to 18 GHz	1.2 :1 typical
	18 to 22 GHz		1.3 :1 typical	
Mechanical Data	Engagement force		1.5 kg	
	Disengagement force		0.2 kg	
	Radial misalignment		+/- 0.5 mm	
	Axial misalignment		0 ~ 1.5 mm	
Material Data	Body		Stainless Steel or Brass	
	Collet		Beryllium copper	
	Insulator		PTFE	
	Center contact		Beryllium copper or Brass	
	Spring		Stainless Steel	
Environmental Testing	Temperature range		-65 ~ +125 °C	
	Vibration		MIL-STD-202 method 204, test condition D	
	Shock		MIL-STD-202 method 213, test condition I	
	Thermal shock		MIL-STD-202 method 107, test condition B	

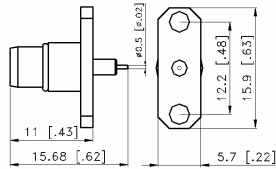
Beyond cutting-edge technology in RF & MW

www.gigalane.com
sales@gigalane.com

Products - Connectors

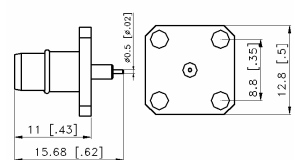
■ Panel Mount Plug (2-Hole)

Part No. PMM-S00-000



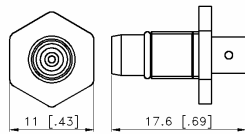
■ Panel Mount Plug (4-Hole)

Part No. PMM-S01-000



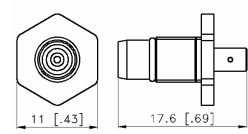
■ Straight Cable Plug (SR085, SF085)

Part No. MMS01



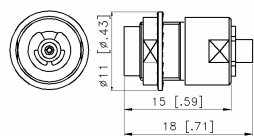
■ Straight Cable Plug (SR141, SF141)

Part No. MMS02



■ Straight Aligner Cable Jack (SR085, SF085)

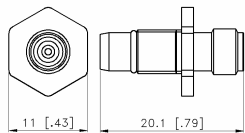
Part No. MFS01



Products - Adapters

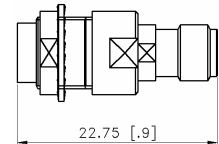
■ BMA(M) to SMA(F) - BH

Part No. MMS-ADP-SFS-01-BH



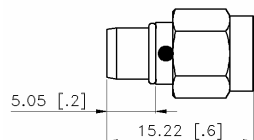
■ BMA(F) to SMA(F) - BH

Part No. MFS-ADP-SFS-01-BH



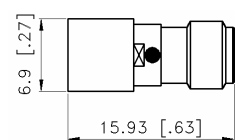
■ BMA(M) to SMA(M)

Part No. MMS-ADP-SMS-01



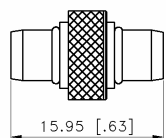
■ BMA(F) to SMA(F)

Part No. MFS-ADP-SFS-02



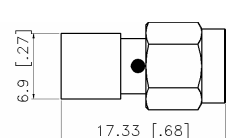
■ BMA(M) to BMA(M)

Part No. MMS-ADP-MMS-01



■ BMA(F) to SMA(M)

Part No. MFS-ADP-SMS-01



Unit : mm [inch]

Beyond cutting-edge technology in RF & MW

• Address : 1-1, Seokwoo-dong, Hwaseong-si, Gyeonggi-do, Korea (445-170)
• Phone : +82-31-233-7325 • Fax : +82-31-233-7317